



3

GETTING READY TO USE ESIGNAL

THIS CHAPTER EXPLAINS how to set up your computer to use eSignal.

What You Need to Get Started

The following is a list of the **recommended*** system requirements for using eSignal:

- 1 Windows 2000, Windows 98, Windows XP, Windows ME or Windows NT 4.0 (with Service Pack 3 or higher)
- 1 IBM-compatible PC with a processor speed of 450 MHz or greater
- 1 128 MB RAM
- 1 20 MB of free disk space
- 1 Microsoft Internet Explorer browser version 5.5 or higher

NOTE: eSignal includes a built-in Browser window for accessing web-based information. The built-in Browser requires Internet Explorer 5.5 or higher. When you're working outside eSignal, you can still use the browser you've always used.

- 1 Cable modem, DSL, ISDN, T1 or T3 Internet connection is highly recommended. At a minimum, you must have a modem or alternative Internet connection that operates at a speed of 28.8 bps or better
- 1 An ISP (Internet service provider) connection for accessing the Internet

Terminology

Modem. This device enables your computer to communicate with the Internet. A modem can be a separate device that plugs into your computer or an internal device that comes ready to use with your computer. The most commonly used modems plug directly into your telephone jack. There are some powerful alternatives to these standard modems, such as ISDN, cable modems, or DSL. They offer much higher speeds, but also cost more.

Modem speed is expressed in kilobits per second (K or Kbs) that represent how fast your modem can send and receive data under optimum conditions. The higher a modem's speed, the better.

Processor (or microprocessor). This is the brain of the computer, the chip that does all the calculating. For PCs, Intel (Pentium series and Celeron) makes the most popular processors, but other companies, such as Advanced Micro Devices, make competitive alternatives. **MHz** (megahertz) is the unit of measure for expressing how fast the processor works. MHz represents millions of cycles per second. In general, the faster the processor operates, the better.

RAM. This stands for random access memory, but you don't really need to know that. RAM is where your computer stores data (programs, files, whatever) while it's in use. Data stored in RAM can be accessed by the computer very quickly. The amount of RAM in a computer is expressed in megabytes (MB). The more RAM you have, the less your computer will need to swap files (a relatively slow operation) back and forth with your hard drive.

* If your system does not meet the recommended system requirements, you may still be able to run eSignal, provided your system meets the minimum system requirements outlined on page 1-3.

Installing eSignal

Before you can install the eSignal software, you'll need the installation files. When you subscribed to eSignal, you should have received a CD-ROM containing the program and installation file. As an alternative, you may have downloaded this file from the eSignal web site.

The eSignal installation program (Installer) guides you through a short, simple installation process. You can run the installer from the eSignal CD-ROM, from the downloaded installation file, or directly from the eSignal web site.

The installer presents you with a sequence of screens displaying information and offering choices. Each screen contains instructions about what to do. After you complete a screen, you move to the next screen by clicking the Next button. If you want to return to an earlier screen to correct a mistake or to check on something you entered, you can click the Back button.

Installation Steps

Before you can install and run eSignal, you'll need to have a working Internet connection. If you need instructions for setting up a connection, see Chapter 4, Connecting to the Internet.

To install the eSignal software:

- 1 If you are running any applications, close them before beginning the installation.
- 2 (*CD-ROM installation only*) Insert your eSignal CD-ROM into your computer's CD-ROM drive. Choose Run from the Start menu, and enter d:\setup. (If your CD-ROM drive isn't drive D, substitute the correct letter.) **Note:** If your CD-ROM supports Autorun, the eSignal installer will start automatically.

(*Download or web site installation only*) Double-click the eSignal.exe file that you downloaded, and then click Continue in the dialog box that appears.

The installer program prepares the required files, then displays a Welcome screen.



- 3 Read the Welcome screen, and then click Next.

- 4 A screen appears that displays the eSignal software license agreement. Read the software license agreement, and then click Yes.



- 5 The installer offers you a choice between a normal, custom or proxy server installation. For a normal installation, select the product name in the list, and then click Next. (Use the normal installation unless you have special circumstances and know exactly which files you need.)

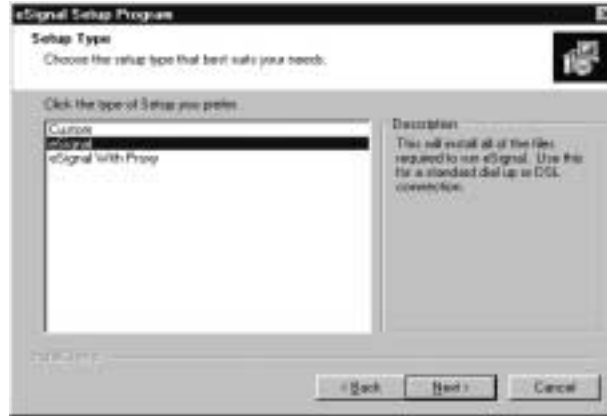
You can run eSignal over a network through a proxy server. Companies commonly use proxy servers to pass data between the internal network and the Internet. Your PC sends a request to the proxy server, which in turn forwards the request to a server on the Internet. Likewise, your incoming Internet traffic goes to the proxy server, which then forwards it over the network to your computer.

If you select the eSignal with Proxy option, please follow steps 6-7. If you did not choose the eSignal with Proxy installation option, skip to step 8 to review the remaining installation steps. If you select the eSignal with Proxy option, you will

.....

Chapter 3
GETTING READY TO USE
ESIGNAL

see the following dialog box where the installer prompts you for access information for your proxy server.



- 6 Enter the IP address and port number for the proxy server, and then click Next. If you don't have this information, you should be able to get it from your system administrator or Information Technology department.



.....

Chapter 3
GETTING READY TO USE
ESIGNAL

In the next screen, the installer asks you for the user name and password you use to access the proxy server

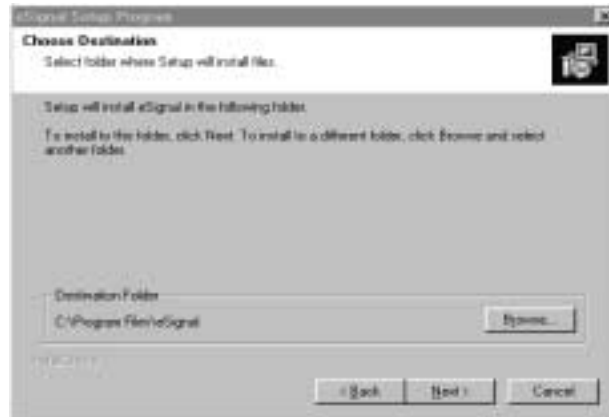
- 7 Enter the user name and password, and then click Next.



.....

Chapter 3
GETTING READY TO USE
ESIGNAL

- 8 The installer prompts you to choose a folder for the files and suggests a location for the software files. Click Next to accept the suggested location. Click Browse to install the software in another location.

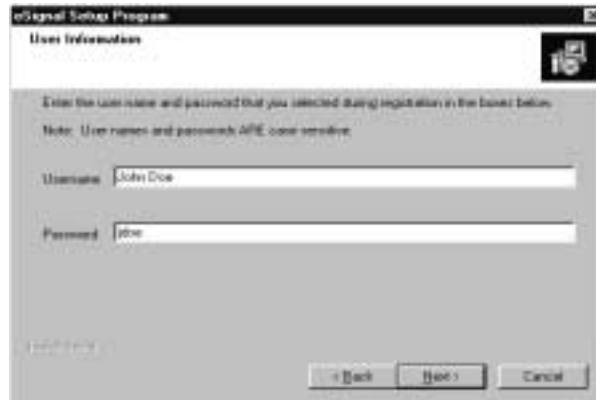


- 9 The installer prompts you to choose the program group folder for the software. This is the name that will appear in the list of programs when you choose Programs from the Windows Start menu



To accept the suggested program group, click Next. To use a different folder, enter a name in the Program Folder field or choose a name from the Existing Folders list.

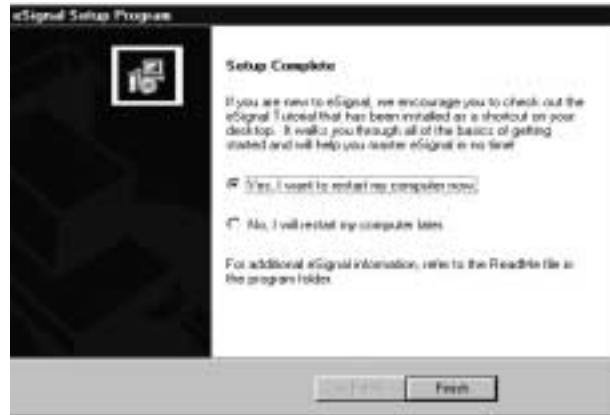
10 The installer displays a screen for you to enter your user name and password.



These are the name and password you selected when you registered for eSignal. Your user name and password are case sensitive, so make sure to enter them exactly as they appeared when you registered. Enter your user name and password (user names and passwords are case sensitive), and then click Next.



- 11 A screen appears where you need to specify your level of service: real-time, delayed, or end-of-day. Select one of these subscription options, then click Next.



- 12 A Setup Complete screen appears. Click Finish to restart your computer and complete the installation

Synchronizing the Time

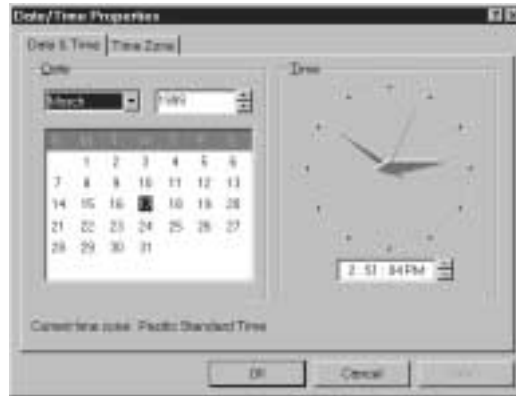
eSignal can display information in real time—as it’s actually happening. Because you’re dealing with time-critical information, it’s important to make sure that your computer and the eSignal network agree on the time. By synchronizing your computer with eSignal network time, you can be sure that the dates and times of trades are displayed correctly.

Note: When you install eSignal, your computer time is automatically synchronized with the eSignal network, so, you normally do not need to synchronize the time.

The times on your computer are shown in local time. When you synchronize, you’ll also want to check the time zone. If the time zone setting is incorrect, you can change it by double-clicking the Date and Time icon in the Windows Control Panel and then making the appropriate changes.

To synchronize the time

- 1 Click Start and choose Control Panel from the Settings menu. Double-click the Date/Time icon. The Date/Time Properties dialog box appears.



- 2 Verify that your PC clock is set to the correct time and date, and that the proper time zone is specified. Click OK to record your changes.
- 3 Start the Data Manager.
- 4 Click Time from the Data menu (Alt-D, T).

.....

Chapter 3
GETTING READY TO USE
ESIGNAL

The Time Synchronization dialog box appears.



- 5 Click the Synchronize Computer Clock checkbox.
- 6 Verify that your time zone setting is correct, and then click OK.