



# 10 DISPLAYING QUOTE DETAILS

---

**DETAIL WINDOWS PROVIDE** quick access to in-depth information about a symbol. The Detail window (shown in Figure 10-1) presents key data from the most recent day's trading, whereas the Fundamentals window (shown in Figure 10-2) presents basic information and fundamental data.



Figure 10-1. Detail Window

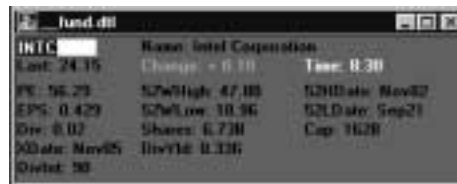


Figure 10-2. Fundamentals Window

By adding and rearranging data fields, you can create a variety of Detail windows for different types of issues—stocks, options, futures, futures options, bonds, funds, and foreign exchange—and different needs.

## *Opening and Closing Detail Windows*

You open, close, and save Detail and Fundamentals window files from the File menu just as you do other eSignal windows. You can also open a Detail or Fundamentals window by right-clicking on a symbol in Quote, Portfolio, Summary and Leaders windows and choosing Detail window or Fundamentals, or by typing a symbol directly into the symbol field of an open Detail window.

## *Changing the Look and Feel*

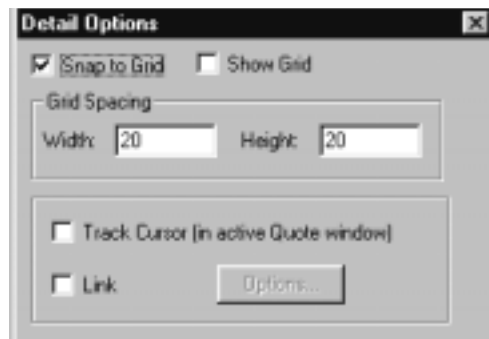
The Detail Options menu provides a number of choices for setting up and customizing a Detail window. The selections are the same for both Detail and Fundamentals windows. Here's what you can do:

- 1 Set grid properties.
- 1 Set the window always to display the detail for whichever symbol is currently highlighted in the active Quote window.
- 1 Choose which window will appear on top if you have multiple Detail windows open.
- 1 Choose whether to display the window's title bar or not. If you choose not to display the title bar, you'll need to turn it back on before you can reposition the window on your screen.
- 1 Set up Autolinking of the Detail window to other windows. See page 10-8, Automatic Linking of Detail windows for instructions on using this feature.
- 1 Change colors and fonts.
- 1 Save the window configuration as the default for any future Detail windows that you create.

You can use the Detail Options dialog box to configure a grid for displaying information and to set up cursor tracking.

**To open the Detail Options dialog box**

- 1 Click inside a Detail Options window, and then choose Properties from the Detail Options menu (Alt-O, P).



The Detail Options dialog box appears displaying the current settings for the open Detail window.

- 2 When you're finished making changes, click OK.

## *Customizing the Grid*

You can make it easier to align fields in Detail windows by using the snap-to-grid feature. This feature ensures that fields are aligned to an evenly spaced grid. You can set the dimensions of the grid and choose whether to display it or not.

**To use the snap-to-grid feature**

- 1 Click the Snap to Grid checkbox.
- 2 To make the grid visible, click the Show Grid checkbox.
- 3 To change the default grid spacing, enter new dimensions in the Width and Height fields. (Dimensions are expressed in pixels.)

## *Enabling Cursor Tracking*

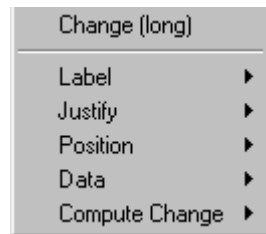
Cursor tracking ties the content of a Detail window to your cursor location. If you click the Track Cursor checkbox, the Detail window automatically displays the detail for the symbol that is currently highlighted in the active Quote or Portfolio window. If you leave the checkbox blank, the window continues to display the detail for the symbol that was active when you created it.

## *Enabling Symbol Linking*

Click the Link checkbox to link the windows in the current layout. When windows are linked, you can enter a symbol in the Detail window and it is automatically entered in the linked windows. (Note that you must save a window before linking it to a Detail window.)

## *Customizing Detail Window Fields*

Changing the look of the information in a Detail window is just a right-click away. When you right-click on a field, you see the pop-up menu shown in Figure 10-3.



**Figure 10-3. Right-Click Pop-Up Menu**

The field name appears at the top on the menu, followed by a list of customization selections. Here's what you can do:

- 1 Toggle the field label on or off

- 1 Position the data to the left or right of the field
- 1 Position the data above, below, to the right, or to the left of the label
- 1 Display the data in long or short form

## *Adding, Deleting, and Rearranging Fields*

You can rearrange the fields in a Detail window or even add, replace, or remove fields.

Rearranging fields so that the data displays in the sequence and arrangement you want is simple. Just click a field, hold down the left mouse button, and drag the field to its new location. Release the mouse button to complete the move.

Deleting a field is even easier. Highlight the field in the Detail window, and then click the Cut icon in the eSignal toolbar.

Replacing and inserting fields is just a tad more complicated—but still pretty simple. Here are the steps to follow for these operations.

### **To insert a data field**

Choose Insert Field from the Edit menu (Alt-E, I or Ctrl-I).

The Fields dialog box will appear as shown in Figure 10-4.

.....

**Chapter 10**  
DISPLAYING QUOTE  
DETAILS



**Figure 10-4. The Fields Dialog Box**

- 4 Select the field you want to add from the list. Hold down the left mouse button and drag the field from the dialog box to the location where you want it to appear in the Detail window.

**To replace a data field**

- 1 Delete the existing field and then follow the steps above to insert the desired field.

## Automatic Linking Between Windows

The autolinking feature allows you to configure the Detail window to link to any number of other windows within the active layout (as shown in Figure 10-5 and Figure 10-6). After you set up autolinking, any symbol you enter in the Detail window is automatically entered for you in the linked windows. Windows that you can link to the Detail window include the Chart, Options, NASDAQ Level II, and the Text Manager windows. You can also choose from a list of Research URLs to link the Detail window to the embedded browser.

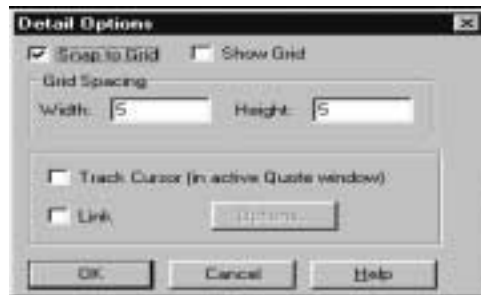


Figure 10-5. Setting Up linking



Figure 10-6. Selecting linked windows

**To set up Autolinking from the Detail window:**

- 1 Right click a Quote window symbol and choose Detail window from the menu that pops up. The Detail window appears.
- 2 .Select Properties from the Detail Options menu. The Detail Options dialog box opens.
- 3 Click Link.
- 4 Click the Options button. The Select Linked Windows dialog box appears.
- 5 Link the Detail window as follows:

To link the windows in the active layout, select each window from the list of available windows and click the Add button. (Only saved windows in the active layout are listed as available.) The windows appear in the Selected box.

To link to the Text Manager to display headlines in the embedded Browser window, click the Link News box. To display unread news, click Launch on Unread News only.

To link to a research URL, click the Link Internet Options box and select the research URL you want to link from the drop-down list.

- 6 Click the OK button. The Detail Options window reappears. Click OK again.

**To use Autolinking, once you have set up windows to be autolinked:**

Enter a symbol in the detail window and press Enter. The symbol is automatically entered into the linked windows. The linked windows display information for the symbol.